

Reims Cathedral

Project Brief



Inspiration

SAGRADA FAMILIA



A PROJECT BY
CORNELIA

3Doodler
ARCHITECTURE
SERIES

Using a 3Doodler, German artist Cornelia Kuglmeier has created a meticulous scale model of the Sagrada Família — Antoni Gaudí’s masterpiece basilica in Barcelona.

Taking more than 350 hours and over 1,000 strands of 3Doodler plastic to complete, the miniature architectural model has been constructed in painstaking detail, replicating

the structural facets of the existing site.

After thoroughly researching the original plans for the church, and piecing together a complete stencil of the entire structure, Kuglmeier spent three months meticulously making the scale model.

See the video here: <https://www.youtube.com/watch?v=rFi5JH1st68>

About Reims Cathedral

Date

Begun ca. 1212

Plan

Aisled basilica intersected by a deeply projecting transept and five-aisled chevet. The chevet of this basilica was entirely replaced by Abbot Pierre de Celles starting in the 1160-70s. The

new chevet has double aisles and is terminated in the east by a hemicycle with a five generous radiating chapels, the axial one deeper than the rest. Slender columns placed in the chapel mouths receive the ribs and arches of the ambulatory and the chapels, allowing the spaces to fuse together. Soon thereafter a new western frontispiece was built incorporating the twin

turrets of the older church where sumptuous articulation includes spolia from Roman monuments. The nave was retrofitted with the extension upwards of a tall clerestory and the installation of rib vaults.

Chronology

In the 11th century, a great basilica with

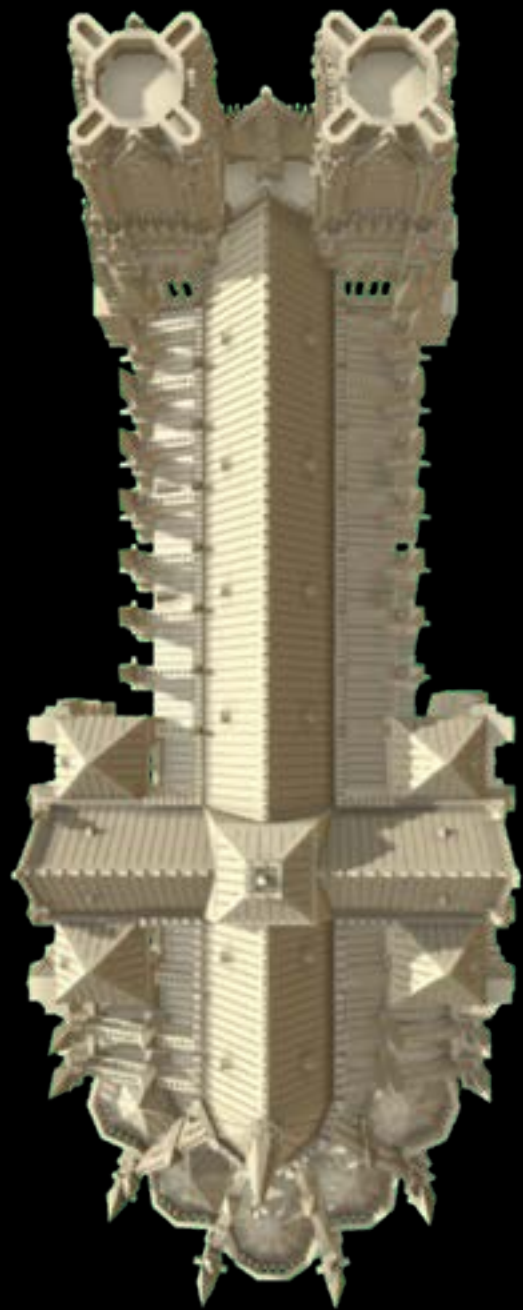
galleries and a wooden roof, vaulted aisles with an intersecting transept was built. Starting 1160-1170s the chevet was entirely replaced and nave retrofitted by Abbot Pierre de Celles. The building was badly ruined in the bombardments of WWI.

Source: mcid.mcah.columbia.edu/art-atlas/mapping-gothic/reims-cath%C3%A9drale-notre-dame



Reference Images

Model on Sketchfab by Cathedralbuilding



About the 3Doodler



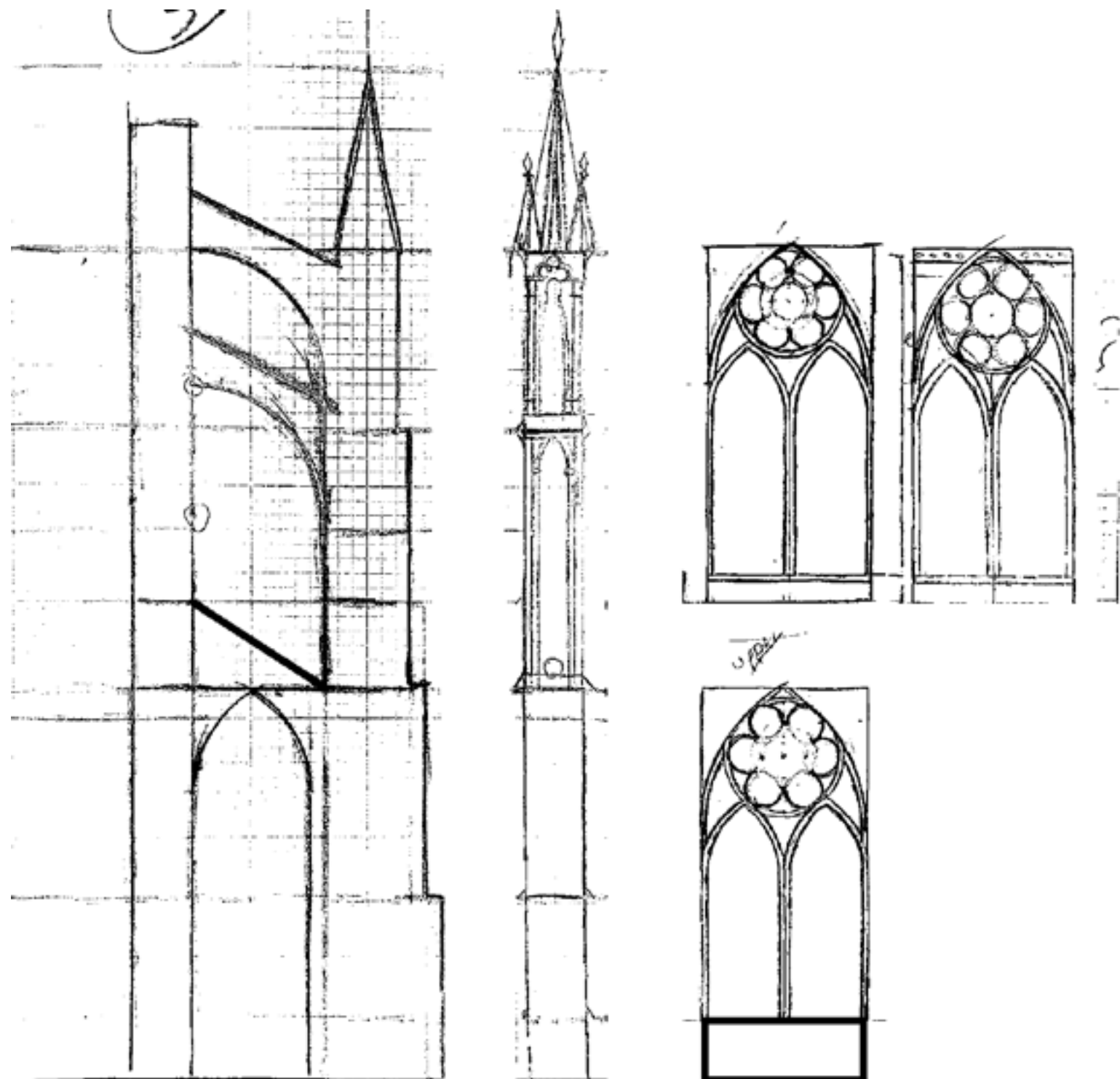
This all-in-one individual learning pack enables kids ages 14+ to explore difficult concepts hands-on in 3D, boosting their creativity and confidence.

Fosters Design Thinking and Creative Doodling: Includes access to our fun and educational webinar series, plus our online library which contains hundreds of hours of FREE projects, lesson plans, stencils and how-to videos.

For more information: <https://the3doodler.com/collections/create-pens/products/create-learn-from-home?variant=31998495658972>

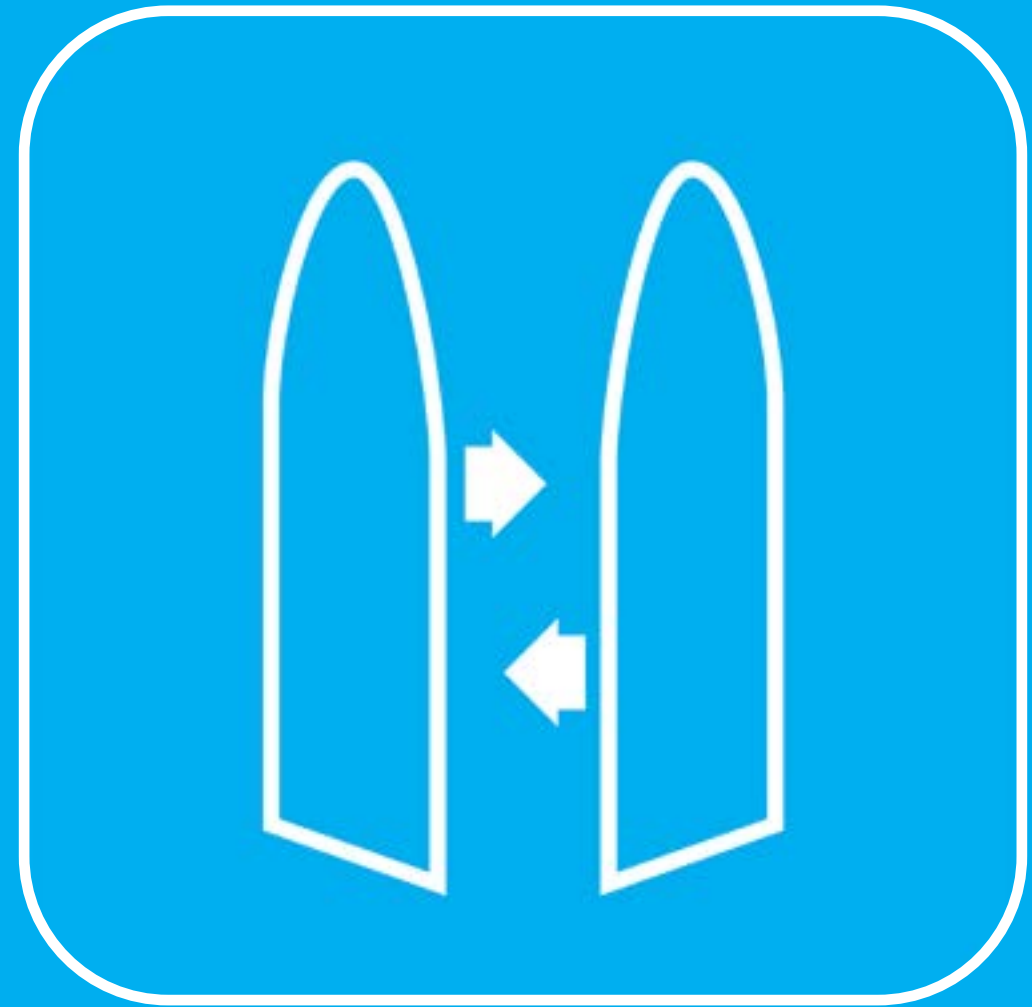
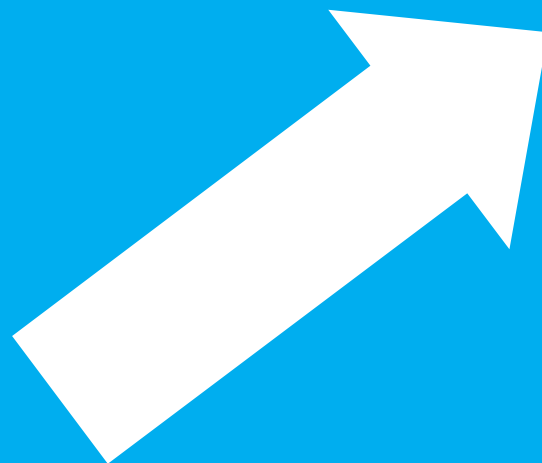
Process

Stencils



Process

Tracing



The Finished Product

